

Any'May

Look Your Best, Feel Your Best

**PROFESSIONAL
DENTAL
DIGITAL
PRODUCTS**

Info@liweymed.com
www.liweymed.com



Air Turbines

Mode : A5

Feature : Clean Head System, Triple Spray

Ref : AT001



Spec : Ceramic Bearings
Speed : 330,000-350,000 min-1
Standard Head / Torque Head



Air Turbines

Model : A5

Feature : Clean Head System, Triple Spray

Ref : AT002



Spec : Ceramic Bearings
Speed : 330,000-350,000 min-1
Standard Head / Torque Head

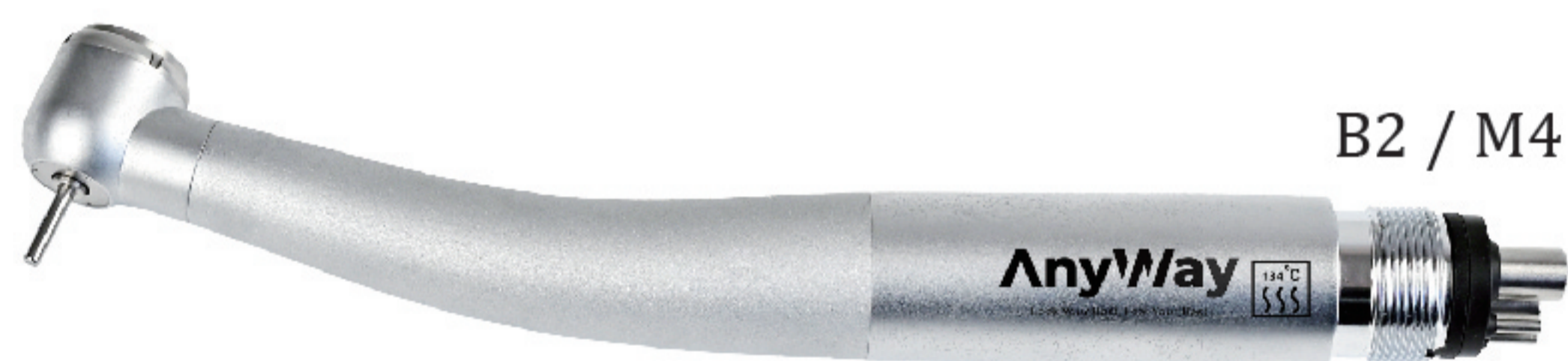


Air Turbines

Model : A5

Feature : Clean Head System, Triple Spray

Ref : AT003



Spec : Ceramic Bearings
Speed : 330,000-350,000 min-1
Standard Head / Torque Head



Air Turbines

Model : A5

Feature : Clean Head System, Triple Spray

Ref : AT004



Spec : Ceramic Bearings
Speed : 330,000-350,000 min-1
Standard Head / Torque Head



Air Turbines

Model : A5

Feature : Clean Head System, Triple Spray

Ref : AT005



Spec : Ceramic Bearings
Speed : 330,000-350,000 min-1
Standard Head / Torque Head



Air Turbines

Model : A5

Feature : Clean Head System, Triple Spray

Ref : AT006



Spec : Ceramic Bearings
Speed : 330,000-350,000 min-1
Standard Head / Torque Head



Air Turbines - Mini Head

Mode : A20

Feature : Clean Head System, Single Spray

Ref : AT007



Spec : Ceramic Bearings
Speed : 330,000-350,000 min-1
Standard Head / Torque Head

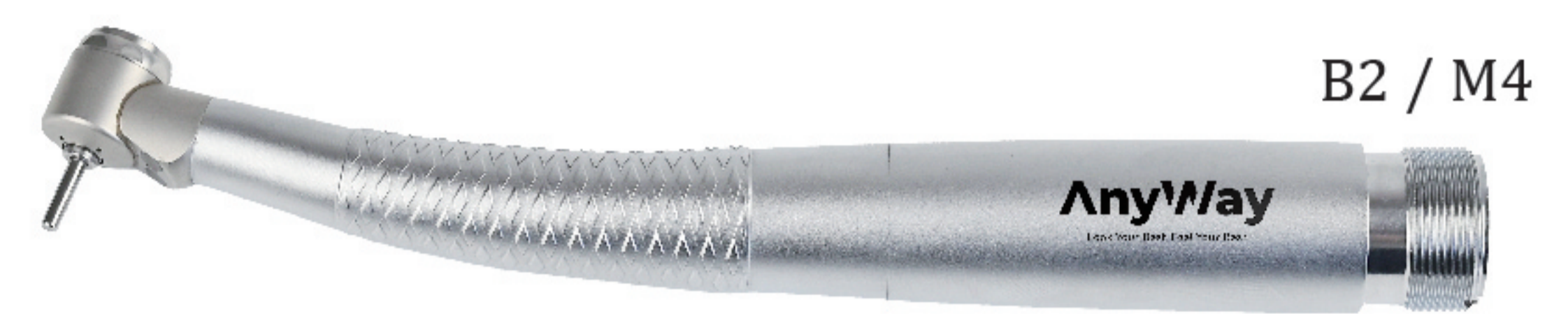


Air Turbines - Mini Head

Model : A20

Feature : Clean Head System, Single Spray

Ref : AT008



Spec : Ceramic Bearings
Speed : 330,000-350,000 min-1
Standard Head / Torque Head



Air Turbines - Mini Head

Model : A20

Feature : Clean Head System, Single Spray

Ref : AT009



Spec : Ceramic Bearings
Speed : 330,000-350,000 min-1
Standard Head / Torque Head



Air Turbines - Mini Head

Model : A20

Feature : Clean Head System, Single Spray

Ref : AT010



Spec : Ceramic Bearings
Speed : 330,000-350,000 min-1
Standard Head / Torque Head



Air Turbines - Mini Head

Model : A20

Feature : Clean Head System, Single Spray

Ref : AT011



Spec : Ceramic Bearings
Speed : 330,000-350,000 min-1
Standard Head / Torque Head



Air Turbines - Mini Head

Model : A20

Feature : Clean Head System, Single Spray

Ref : AT012



Spec : Ceramic Bearings
Speed : 330,000-350,000 min-1
Standard Head / Torque Head



Air Turbines

Mode : A26

Feature : Clean Head System, Quattro Spray

Ref : AT013



B2 / M4

Spec : Ceramic Bearings
Speed : 330,000-350,000 min-1
Standard Head / Torque Head



Air Turbines

Model : A26

Feature : Clean Head System, Quattro Spray

Ref : AT014



B2 / M4

Spec : Ceramic Bearings
Speed : 330,000-350,000 min-1
Standard Head / Torque Head



Air Turbines

Model : A26

Feature : Clean Head System, Quattro Spray

Ref : AT015



B2 / M4

Spec : Ceramic Bearings
Speed : 330,000-350,000 min-1
Standard Head / Torque Head



Air Turbines

Model : A26

Feature : Clean Head System, Quattro Spray

Ref : AT016



B2 / M4

Spec : Ceramic Bearings
Speed : 330,000-350,000 min-1
Standard Head / Torque Head



Air Turbines

Model : A26

Feature : Clean Head System, Quattro Spray

Ref : AT017



B2 / M4

Spec : Ceramic Bearings
Speed : 330,000-350,000 min-1
Standard Head / Torque Head

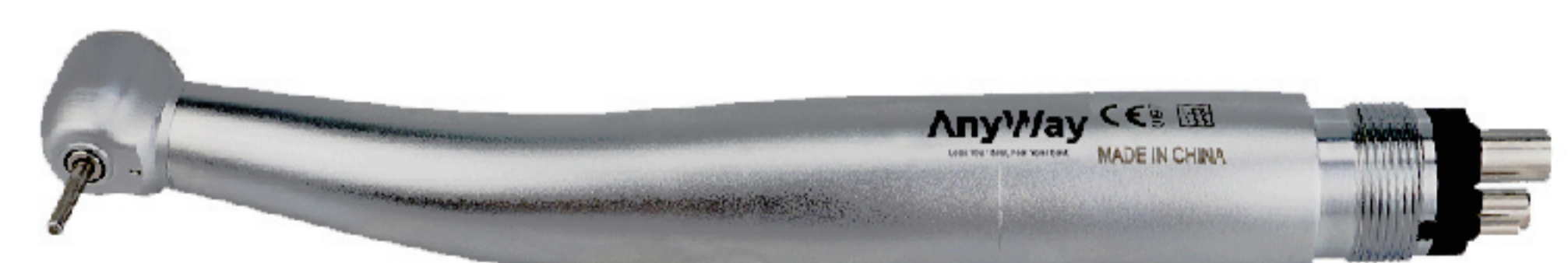


Air Turbines

Model : A36

Feature : Clean Head System, Single Spray

Ref : AT018



B2 / M4

Spec : Ceramic Bearings
Speed : 330,000-350,000 min-1
Standard Head / Torque Head

Air Turbines - 45°

Model : A12

Feature : Excellent accessibility and visibility

Ref : AT019



Spec : Ceramic Bearings , Single Spray
Speed : 330,000-350,000 min-1
Standard Head



Air Turbines - 45°

Model : A12

Feature : Excellent accessibility and visibility

Ref : AT020



Spec : Ceramic Bearings , Single Spray
Speed : 330,000-350,000 min-1
Standard Head

Air Turbines - 45°

Model : A12

Feature : Excellent accessibility and visibility

Ref : AT021



Spec : Ceramic Bearings , Single Spray
Speed : 330,000-350,000 min-1
Standard Head

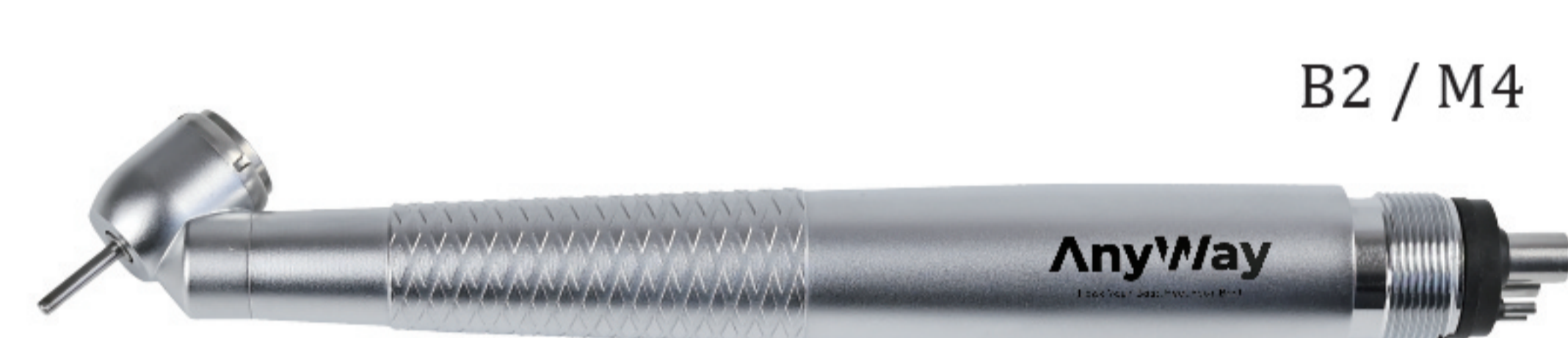


Air Turbines - 45°

Model : A12

Feature : Excellent accessibility and visibility

Ref : AT022



Spec : Ceramic Bearings , Single Spray
Speed : 330,000-350,000 min-1
Standard Head



Air Turbines - 45°

Model : A12

Feature : Excellent accessibility and visibility

Ref : AT023



Spec : Ceramic Bearings , Single Spray
Speed : 350,000-380,000 min-1
Standard Head

Air Turbines

Model : A26

Feature : Clean Head System, Quattro Spray

Ref : AT025



Spec : Ceramic Bearings , Quattro Spray
Speed : 330,000-350,000 min-1
Standard Head

Air Turbines

Model : A26

Feature : Clean Head System, Quattro Spray

Ref : AT026



Spec : Ceramic Bearings , Quattro Spray
Speed : 330,000-350,000 min-1
Standard Head

Air Turbines

Model : A26

Feature : Clean Head System, Three Spray

Ref : AT027



Spec : Ceramic Bearings , Quattro Spray
Speed : 330,000-350,000 min-1
Standard Head

Air Turbines

Model : A26

Feature : Clean Head System, Quattro Spray

Ref : AT028



Spec : Ceramic Bearings, Quattro Spray
Speed : 330,000-350,000 min-1
Standard Head

Air Turbines

Model : A26

Feature : Clean Head System, Quattro Spray

Ref : AT029



Spec : Ceramic Bearings , Quattro Spray
Speed : 350,000-380,000 min-1
Standard Head

Air Turbines

Model : A26

Feature : Clean Head System, Quattro Spray

Ref : AT030



Spec : Ceramic Bearings, Quattro Spray
Speed : 330,000-350,000 min-1
Standard Head

Air Turbines - 45°

Mode : A12

Feature : Clean Head System, Single Spray

Ref : AT031



Spec : Ceramic Bearings
Speed : 330,000-350,000 min-1
Standard Head

Air Turbines - 45°

Model : A12

Feature : Clean Head System, Single Spray

Ref : AT032



Spec : Ceramic Bearings
Speed : 330,000-350,000 min-1
Standard Head

Air Turbines

Model : A5

Feature : Clean Head System, Triple Spray

Ref : AT033



Spec : Ceramic Bearings
Speed : 330,000-350,000 min-1
Standard Head

Air Turbines

Model : A5

Feature : Clean Head System, Triple Spray

Ref : AT034



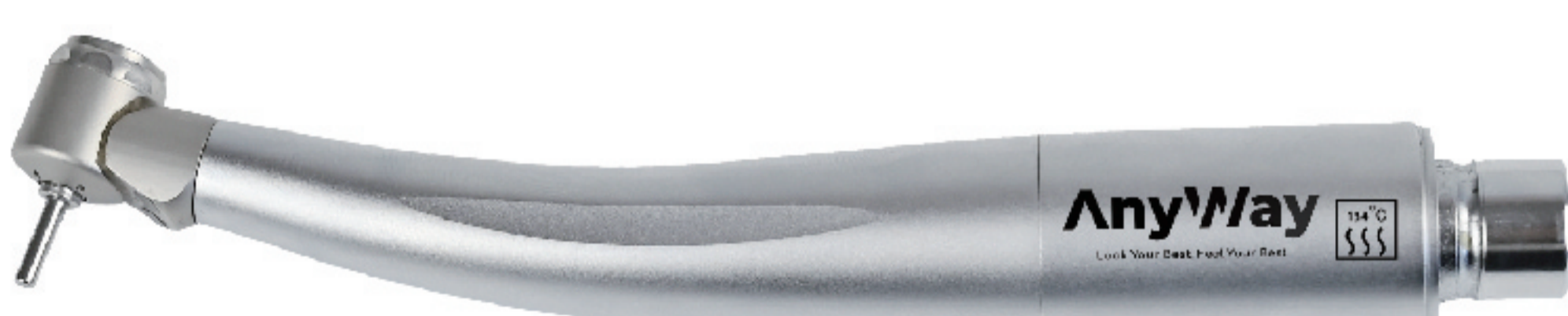
Spec : Ceramic Bearings
Speed : 330,000-350,000 min-1
Standard Head

Air Turbines - Mini Head

Model : A20

Feature : Clean Head System, Single Spray

Ref : AT035



Spec : Ceramic Bearings
Speed : 330,000-350,000 min-1
Standard Head / Torque Head

Air Turbines - Mini Head

Model : A20

Feature : Clean Head System, Single Spray

Ref : AT036



Spec : Ceramic Bearings
Speed : 330,000-350,000 min-1
Standard Head

Air Turbines - Glass Optical Fiber

Model : A53

Feature : Water -Air Separation, Triple Spray , 360° Cooling

Ref : AT037



KaVo Coupling

Spec : Ceramic Bearings , Triple Spray
Speed : 330,000-350,000 min-1
Standard Head ,



Air Turbines - Glass Optical Fiber

Model : A53

Feature : Water -Air Separation, Triple Spray , 360° Cooling

Ref : AT038



KaVo Coupling

Spec : Ceramic Bearings , Triple Spray
Speed : 330,000-350,000 min-1
Standard Head ,



Air Turbines - Glass Optical Fiber

Model : A53

Feature : Water -Air Separation, Triple Spray , 360° Cooling

Ref : AT039



B2 / M4

Spec : Ceramic Bearings , Triple Spray
Speed : 330,000-350,000 min-1
Standard Head



Air Turbines - Glass Optical Fiber

Model : A53

Feature : Water -Air Separation, Triple Spray , 360° Cooling

Ref : AT040



B2 / M4

Spec : Ceramic Bearings, Triple Spray
Speed : 330,000-350,000 min-1
Standard Head



Air Turbines - Glass Optical Fiber

Model : A53

Feature : Water -Air Separation, Triple Spray , 360° Cooling

Ref : AT041



B2 / M4

Spec : Ceramic Bearings , Triple Spray
Speed : 330,000-350,000 min-1
Standard Head



Air Turbines - Glass Optical Fiber

Model : A53

Feature : Water -Air Separation, Triple Spray , 360° Cooling

Ref : AT042



B2 / M4

Spec : Ceramic Bearings, Triple Spray
Speed : 330,000-350,000 min-1
Standard Head



Quick Couplings

Model : CN401

Compatible: NSK 4 Hole

Ref: QC001



Spec : Anti-Retraction Valve

Quick Couplings

Model : CN402

Compatible : NSK 4 Hole

Ref: QC002



Spec : Anti-Retraction Valve

Quick Couplings

Model : CN601

Compatible: NSK 6 Holes

Ref: QC003



Spec : Anti-Retraction Valve

Quick Couplings

Model : CK401

Compatible : Kavo 4 Hole

Ref: QC004



Spec : Anti-Retraction Valve

Quick Couplings

Model : CK402

Compatible : Kavo 6 Hole

Ref: QC005



Spec : Anti-Retraction Valve

Quick Couplings

Model : CK601

Compatible : Kavo 6 Holes

Ref: QC006



Spec : Anti-Retraction Valve

Quick Couplings

Model : CB401

Compatible : Bien-Air 4 Hole

Ref: QC007



Spec : Anti-Retraction Valve

Quick Couplings

Model : CS401

Compatible : Sirona 4 Hole

Ref: QC008



Spec : Anti-Retraction Valve

Quick Couplings

Model : CS601

Compatible : Sirona 6 Holes

Ref: QC009



Spec : Anti-Retraction Valve

Contra Angles

Size : X95L
Color : Cellular Glass Optics , Clean Head System
Ref: AT013



1:5 Increasing

FG burs (ø1.6)

Spec : Max Speed: 200,000 min-1
Ceramic Bearings , Quattro Spray
Anti Heat System

Contra Angles

Size : Z45L
Color : Cellular Glass Optics , Clean Head System
Ref: AT014



1:4.2 Increasing

FG burs (ø1.6)

Spec : Max Speed: 200,000 min-1
Ceramic Bearings , Quattro Spray
Anti Heat System

Contra Angles

Model : X25L
Feature : Cellular Glass Optics , Cooling
Ref: AT016



1:1 Direct Drive

CA burs (ø2.35)

Spec : Max Speed: 40,000 min-1
Ceramic Bearings , Single Spray
Anti Heat System

Implant Contra Angles

Model : DSG20L
Feature : Cellular Glass Optics , Cooling
Ref: AT017

CA burs (ø2.35)



20:1 Reduction

Spec : Max Speed: 2,000 min-1
Max. Torque : 80 Ncm , Ceramic Bearings
External and internal cooling

Implant Contra Angles

Model : SG20
Feature : Push Button Chuck ,
Ref: AT018

CA burs (ø2.35)



20:1 Reduction

Spec : Max Speed: 2,000 min-1
Max. Torque : 80 Ncm
Ceramic Bearings , External cooling

Implant Contra Angles

Model : X-SG20L
Feature : Cellular Glass Optics , Cooling
Ref: AT015

CA burs (ø2.35)



20:1 Reduction

Spec : Max Speed: 2,000 min-1
Max. Torque : 80 Ncm
External and internal cooling

Endodontic Handpiece

Model : FCN

Feature : Miniature Head , Push Button Chuck

Ref : AT019

Ni-Ti files (ø2.35)



1:1 Direct Drive

Spec : Max Speed: 10,000 min-1
360° Rotation , External Water Spray

Endodontic Handpiece

Model : FC

Feature : Miniature Head , Push Button Chuck

Ref : AT020

Ni-Ti files (ø2.35)



1:1 Direct Drive

Spec : Max Speed: 10,000 min-1
360° Rotation , External Water Spray

Endodontic Handpiece

Model : F16RN

Feature : Miniature Head , Push Button Chuck

Ref : AT022

Ni-Ti files (ø2.35)



16:1 Reduction

Spec : Max Speed: 650 min-1
360° Rotation , External Water Spray

Endodontic Handpiece

Model : F16R

Feature : Miniature Head , Push Button Chuck

Ref : AT023

Ni-Ti files (ø2.35)



16:1 Reduction

Spec : Max Speed: 650 min-1
360° Rotation , External Water Spray

Endodontic Handpiece

Model : ER106

Feature : Push Button Chuck

Ref : AT025

Ni-Ti files (ø2.35)



16:1 Reduction

Spec : Max Speed: 2,500 min-1
360° Rotation , External Water Spray

Endodontic Handpiece

Model : ER10

Feature : Push Button Chuck

Ref : AT026

Hand files



10:1 Reduction

Spec : Max Speed: 4,000 min-1
60° Twist , External Water Spray

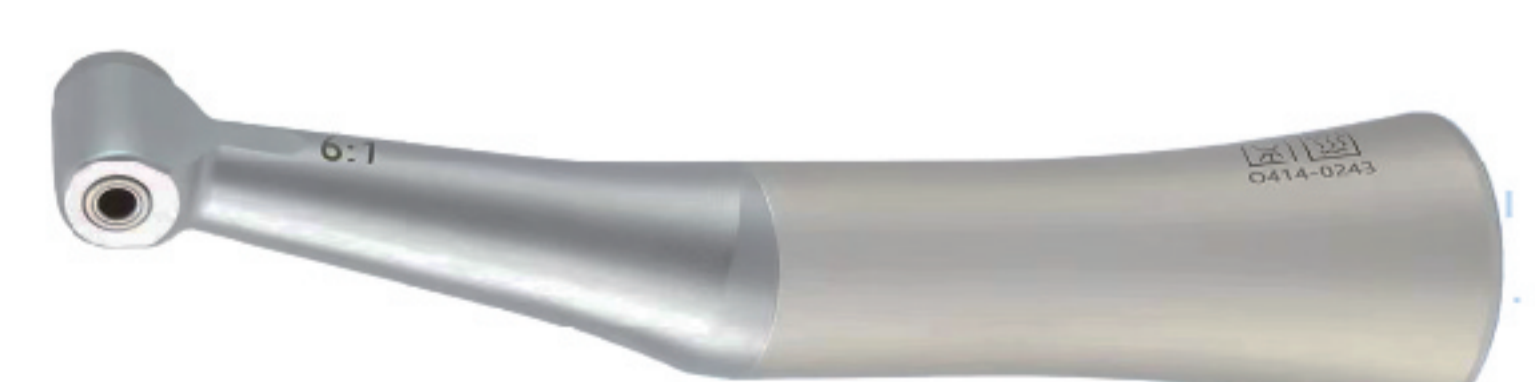
Endodontic Handpiece

Model : NLZ 6:1

Feature : For CA burs (ø2.35), Clean Head System

Ref : AT027

Ni-Ti files (ø2.35)



6:1 Reduction

Spec : Max Speed: 1,000 min-1

FX Serial

Model : FX205 / FX65 / FX25
Feature : For CA burs (ø2.35), Clean Head System
Ref: M1005001 / H1014001 / C1052001



2 hole / 4 hole

Spec : Max Speed: 22,000 min⁻¹ ±10%
 Max Speed: 40,000 min⁻¹
 Max Speed: 40,000 min⁻¹

EX Serial

Model : EC / EX-6B / EX-203C
Feature : For CA burs (ø2.35), Clean Head System
Ref: Y110148 / H260001 / C1152001



2 hole / 4 hole

Spec : Max Speed: 22,000 min⁻¹ ±10%
 Max Speed: 40,000 min⁻¹
 Max Speed: 40,000 min⁻¹

LED Serial

Model : AW100 / AW101 / AW102
Feature : For CA burs (ø2.35), Clean Head System
Ref: AT028 / AT029 / AT030



2 hole / 4 hole

Spec : Max Speed: 22,000 min⁻¹ ±10%
 Max Speed: 40,000 min⁻¹
 Max Speed: 40,000 min⁻¹

Universal Torque Wrench

Model : Torq Control
Feature : Precise Torque Control
Ref: AT031



Torque Range: 10-35 Ncm
Compatible : Anthogyr

20° Angle Handpieces

Model : SGA-ES
Feature : Implant Microsurgery
Ref: AT032



Max Speed : 40,000 rpm (1:1)
Bur Specification : CA Φ2.35mm
Standard Coupler , External Waterway

Dental Saw Handpieces

Model : S-8R / S-8 S / S-8 O
Feature : Fast, powerful and durable
Ref: AT033



Transmission ratio: 3,25:1 / 3,25:1 / 3,4:1
Frequency (strokes/min.): 12.300 / 12.300 / 11.800
Drive speed: 40.000 min⁻¹

Dental Implant Torque Wrench

Model : Torq Adjust
Feature : Adjustable Torque Wrench - 16Pcs
Ref: AT034



Compatible : Xive, Ankylos, Osstem, 3I, Megagen
 Cortex, Ticare, MIS, ABT, Zimmer
 Dentium, Dentis, Adin, EBGO
 Astra, Nobel, Straumann, ICX

Root Canal File Extractor

Feature : Compatible with various endodontic file systems
Ref: AT035



Length : 19 mm
Size : T6 / T7 / T8 / T9 / T11
 F-6 / F-9 / F-11 H-8 / H-9 / H-11
 Φ1.1 Φ0.9 Φ0.8

Gutta Percha Plugger

Feature : Suitable for root canals with different Tapers and shapes
Ref: AT036



Length : 160 mm
Size : Niti 35 Ss70 Niti40 Ss80
 Niti 50 Ss100 Niti60 Ss120

Dental Electric Motor

Model : NL400
Feature : High performance brushless motor
Ref : DE001



Connector : ISO-E Type
Working Mode : 1:1 / 1:5 / 16:1
Packing : 22.5*21.3*12cm, 1.2Kgs

Endo Motor Led

Model : Endo Smart
Feature : Wide torque range , 9 Programs
Ref : DE002



Spec : DC3.7V / 950mAh , Auto Stop Reverse
 Compatible with most rotary files
Packing : 188*90*85mm , 0.5 Kgs

Apex Locator

Model : Apex-II
Feature : 4.5" LCD Screen Visualization
Ref : DE003



Spec : DC3.7V / 2000mAh , Rechargeable battery
 LED indicator & clear bright LCD display
Packing : 133*133*123mm , 0.65Kgs

Ultrasonic Scaler

Model : VRN A8
Feature : Scaling, Perio, Endo irrigation
Ref : DE005



Working Mode : G, P, E
Working Tips : G1, G2, G4, P1, E1
Packing : 34*24*18cm , 2.5 Kgs

Endo Activator

Model : DA-1
Feature : Make the root cleaner, improve activation
Ref : DE004



Spec : Facilitates upward debris removal
 Cordless ultrasonic operation
Packing : 183*23*43mm , 1Kgs

Ultrasonic Scaler

Model : VRN A8 - D
Feature : Scaling, Perio, Endo irrigation
Ref : DE006



Working Mode : G, P, E
Working Tips : G1, G2, G4, P1, E1
Packing : 34*24*18cm , 2.5 Kgs

LED Curing Light

Working Model : P1 - P6
Specification : 5 W
Ref : DE007



Intensity : 2000mW / cm2
Battery : 3.7V/1800mAh
Packing : 23*14*8cm 0.6Kg

LED Curing Light

Working Model : P1 - P3
Specification : 5 W
Ref :



Intensity : 2000mW / cm2
Battery : 3.7V/1400mAh
Packing : 22*16*7cm 0.6Kg

Disposable Trophy Angles Cup

Feature : Ergonomically Designed , Reciprocating
Color : Blue , Green , Purple
Ref : DD031



Packing : 100 Pcs / Box , 20 Boxes / Ctn , 8.1 Kgs

One Screw-In RA Propy Cups

Feature : Screw-In , Latex-Free , Webbed
Color : Assorted Colours
Ref : DD032



Packing : 100 Pcs/ Box , 100 Boxes / Ctn , 5.45Kgs

Disposable Propy Brush

Feature : RA Latch , Latex-Free , Webbed
Color : Bristles
Ref : DD036



Packing : 100 Pcs/ Box , 100 Boxes / Ctn , 17.28Kgs

RA Rainbow Propy Cups

Feature : RA Latch , Latex-Free , Webbed
Color : Assorted Colours
Ref : DD033



Packing : 100 Pcs/ Box , 100 Boxes / Ctn , 9.28Kgs

Disposable Propy Brush

Feature : RA Latch , Latex-Free , Webbed
Color : Assorted Colours
Ref : DD034



Packing : 100 Pcs/ Box , 100 Boxes / Ctn , 12.28Kgs

Disposable Propy Brush

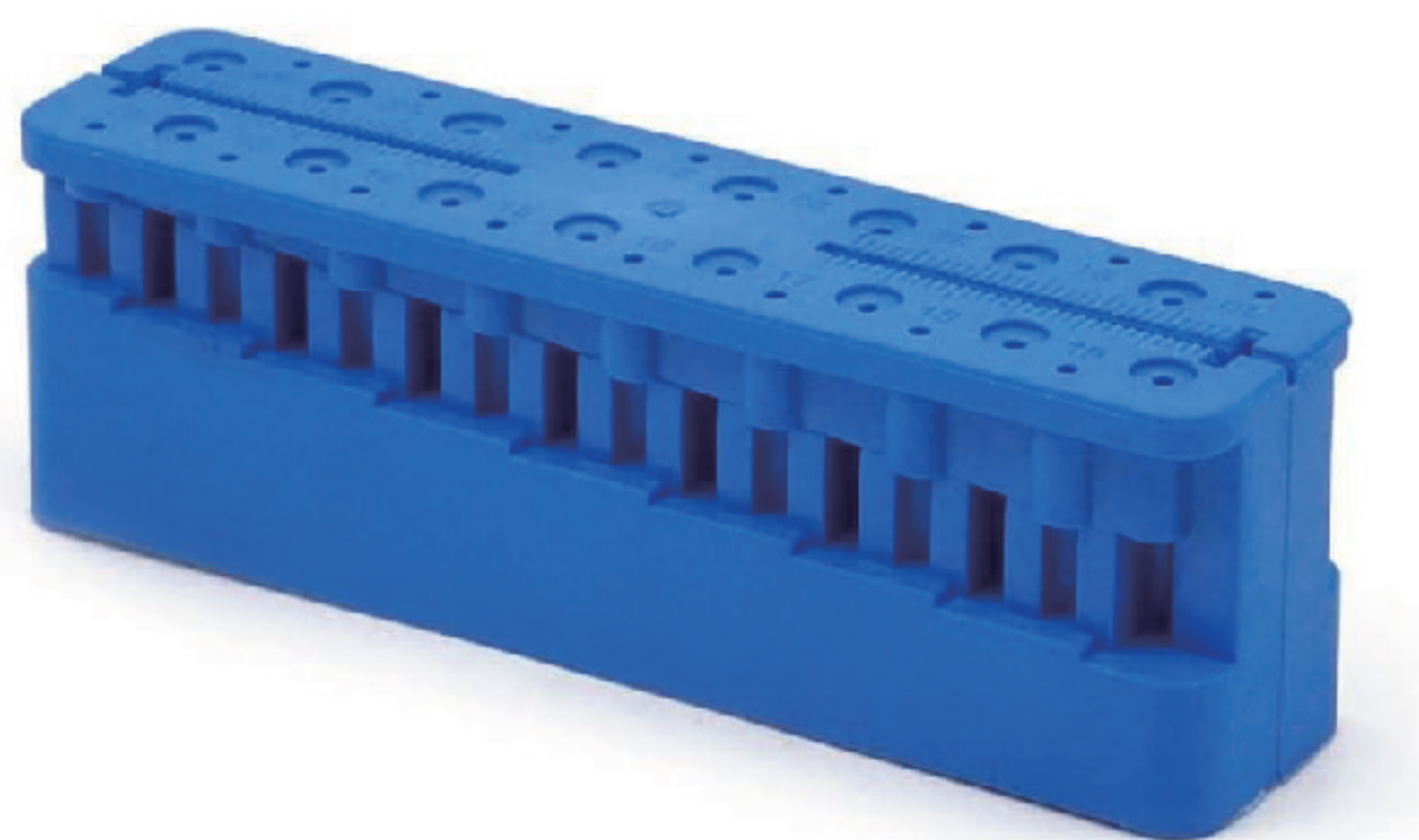
Feature : RA Latch , Latex-Free , Webbed
Color : Assorted Colours
Ref : DD035



Packing : 100 Pcs/ Box , 100 Boxes / Ctn , 12.28Kgs

Endo Ruler

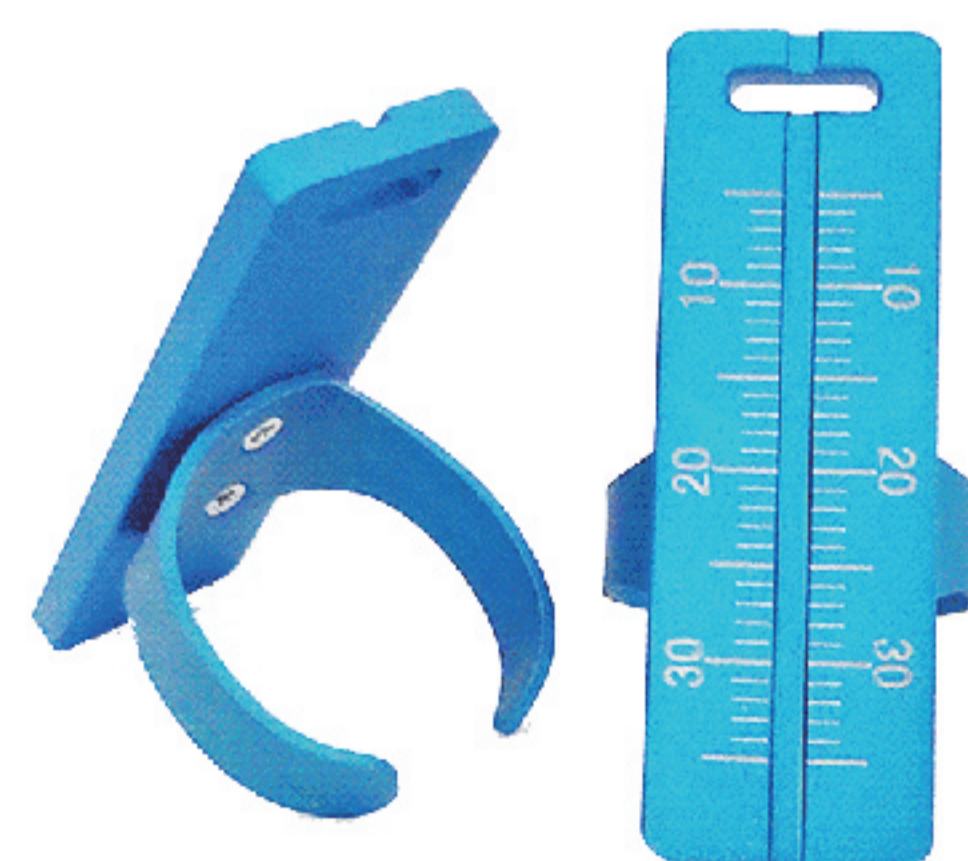
Feature : Plastic , Autoclavable
Length : 100*24*32mm (Gauge: 0-40mm)
Ref : DD037



Packing : 100 Pcs/Box , 36.8*23*16.5cm , 4.28 Kgs

Endo Ruler Ring

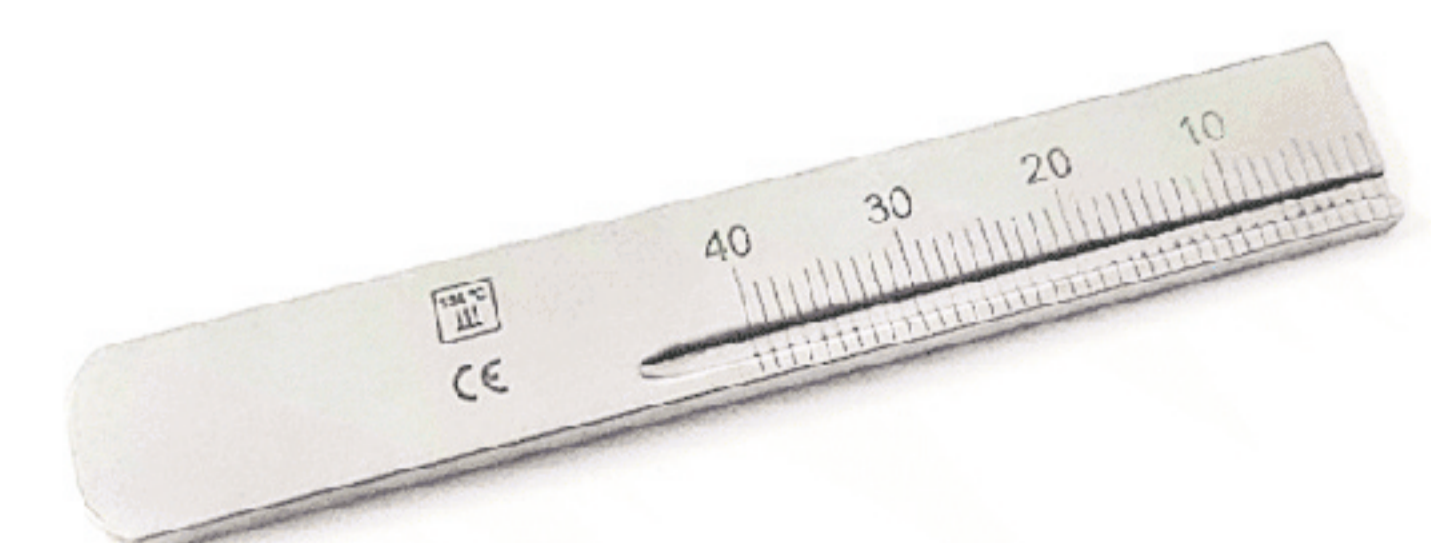
Feature : Aluminium
Gauge : 0-35mm
Ref : DD040



Packing : 100 Pcs/Box , 25.5*16*12cm , 1.1Kgs

Endo Ruler

Feature : Durable Stainless Steel
Length : 80*12.5*3mm (Gauge: 0-40mm)
Ref : DD038



Packing : 100 Pcs/Box ,

Dental Flosser

Model : AWF01
Feature : Portability and Home Use
Ref : DH001



Waterproof : IPX7 **Capacity :** 160ml
Battery : 1250mAh **Pressure :** 2-140 PSI
Packing : L93*W81*H170mm, 312g

Dental Flosser

Model : AWF02
Feature : Portability and Home Use
Ref : DH002



Waterproof : IPX7 **Capacity :** 180ml
Battery : 1400mAh **Pressure :** 5-120 PSI
Packing : L104*W103*H247mm, 445g

Dental Flosser

Model : AWF03
Feature : Portability and Home Use
Ref : DH003



Waterproof : IPX7 **Capacity :** 200ml
Battery : 1200mAh **Pressure :** 5-120 PSI
Packing : L134*W73*H58mm, 249g

Dental Flosser

Model : AWF04
Feature : Portability and Home Use
Ref : DH004



Waterproof : IPX7 **Capacity :** 160ml
Battery : 1250mAh **Pressure :** 2-140 PSI
Packing : L93*W81*H170mm, 307g

Dental Flosser

Model : AWF05
Feature : Portability and Home Use
Ref : DH005



Waterproof : IPX7 **Capacity :** 120ml
Battery : 1250mAh **Pressure :** 2-140 PSI
Packing : L93*W90*H170mm, 252g

Sonic Electric Toothbrush

Model : AWF06
Feature : Portability and Home Use
Ref : DH006



Waterproof : IPX7 **Material:** ABS
Battery : 750mAh **Gear:** 3 modes
Vibration Frequency : up to 37,800 times/ Mins

Sonic Electric Toothbrush

Model : AWF07
Feature : Portability and Home Use
Ref : DH007



Waterproof : IPX7 **Material:** ABS
Battery : 1800mAh **Gear:** 5 modes
Vibration Frequency : up to 37,800 times/ Mins

Sonic Electric Toothbrush

Model : AWF08
Feature : Portability and Home Use
Ref : DH008



Waterproof : IPX7 **Material:** ABS
Battery : 1100mAh **Gear:** 5 modes
Vibration Frequency : up to 37,800 times/ Mins

Sonic Electric Toothbrush

Model : AWF09
Feature : 60° Oscillating Rotating
Ref : DH009



Waterproof : IPX7 **Material:** ABS
Battery : 900*2mAh **Gear:** 3 modes
Vibration Frequency : up to 60,000 times/ Mins

Double-sided Digital Signage

Feature : High brightness for clear visibility,
Perfect for both indoor and outdoor use.
Ideal for storefronts, retail, and public spaces



Size : 43" / 49" / 55"
400 nits+400 nits / 700 nits+700 nits

Wall-mounted Digital Signage

Feature : All-In-One wallmount 2K/4K Display.
Ideal for impactful digital signage,
Sleek design for retail, corporate, and public spaces.



RK3288 2+32G, RK3288 4+64G
Size : 18.5" / 21" / 23.8" / 27" / 32" / 43" / 49" / 55" / 65"

Wall-mounted Digital Signage

Feature : All-In-One wallmount 2K Display.
Ideal for impactful digital signage,
Sleek design for retail, corporate, and public spaces.



RK3288 23.8"



RK3288 22" / 33.2" / 44"

Photo Frame Display

Feature : Great range of artwork
Can display art and photos
Anti-glare included, Android 13



RK3288 2+32G, RK3288 4+64G
Size : 10.1" / 15.6" / 18.5" / 21.5" / 23.8" / 27" / 32" / 43" / 49"

Portable Digital Signage

Feature : All-In-One FreeStanding 4K LED ePoster.
Ideal for impactful digital signage, Battery Inside
Sleek design for retail, corporate, and public spaces.



RK3288 2+32G, RK3288 4+64G
Size : 43" / 49" / 55"

MT8781/ RK3588
Size : 23.8" / 27" / 32"

FreeStanding Totem / Digital Signage

Feature : All-In-One FreeStanding 4K LED ePoster.
Ideal for impactful digital signage,
Sleek design for retail, corporate, and public spaces.



RK3288 2+32G, RK3288 4+64G
Size : 32" / 43" / 49" / 55" / 65" / 75" / 86"

Interactive Whiteboard

Feature : 4K smart board with multi-touch infrared technology, Android 13, and anti-glare display. Ideal for teaching, business, and interactive presentations.



Size : 55" / 65" / 75" / 86" / 98"
 982S 4+32G, 982S 4+64G, 982S 8+128G,
 RK3588 4+64G, RK3588 8+128G, RK3588 32+256G

OPS - Mini Pc

Feature : OPS-10G Mini PC featuring a 10th Gen i3 / i5 / i7 processor, Quad-Core 1.6GHz, Type-C, 4K@60Hz display, and versatile connectivity options. Ideal for high-performance computing needs.



i3 10110U 4G+128G, i3 10110U 8G+256G, i3 10110U 16G+512G,
 i5 10210U 4G+128G, i5 10210U 8G+256G, i5 10210U 16G+512G,
 i7 10510U 4G+128G, i7 10510U 8G+256G, i7 10510U 16G+512G

LCD Videowall Displays

Feature : High Resolution, Brightness and Color Accuracy , Wide Viewing Angles , Customizable Software , Remote Management ;



Size : 49" / 55" / 65" Bezel: 3.5mm, 1.8mm, or 0.88mm

AI Edge Computing Box

Feature : RK3588 solutions, supporting up to 6TOPS NPU AI processing, 8K output, and multi-screen display. Ideal for AI edge computing, Facial recognition, object detection, and more. Android 13



RK3588 4+32G, RK3588 8+128G

Indoor Fixed LED Display

Feature : Modular Design , High Resolution, Brightness and Color Accuracy , Wide Viewing Angles , Customizable Software , Remote Management ;



Pixel Pitch(mm): 1.25 / 1.56 / 1.667 / 1.875 / 2 / 2.5 / 3 / 3.91

Interactive LED Floor Display

Feature : Excels in load-bearing performance. Extremely short response time, high stability and the wide viewing angle



Pixel Pitch(mm): 2.6 / 2.9 / 3.9 / 4.4 / 5.2 / 6.25